

DOUGLAS COUNTY CLEAN WATER PLAN

Modified by the City of Oakland

Stormwater Program

The Douglas County Stormwater Program is a facet of the Douglas County Public Works Department. The objective is to educate and engage our citizens and businesses in improving water quality through pollution prevention best practices and stewardship of local waterways. The City of Oakland encourages residents to review this material with the same objective.

The County's Stormwater Program Goals Include:

- Expanding community awareness and knowledge of local waterways, pollution prevention, personal impacts to rivers, lakes and streams, and best practice behaviors.
- Developing programs that call for increased community participation and action by citizens and businesses to prevent polluted runoff and improve water quality.
- Increasing citizen stewardship and responsibility for local streams and overall water quality

Did you know that stormwater flows to streams?

Most storm drains, roadside ditches and catch basins empty directly into our local streams and rivers. Storm drains are the grated openings located on streets and roads and roadside ditches and catch basins are located along most roadways, they collect water from rain, irrigation and other water runoff from actions like car washing. The water flushes pollution, such as fertilizers, lawn chemicals, street oils, pet waste, garbage and litter off our lawns, streets and property into waterways. Polluted water can impact the health of people and pets, harm fish and other aquatic life, and degrade the quality of our waterways.

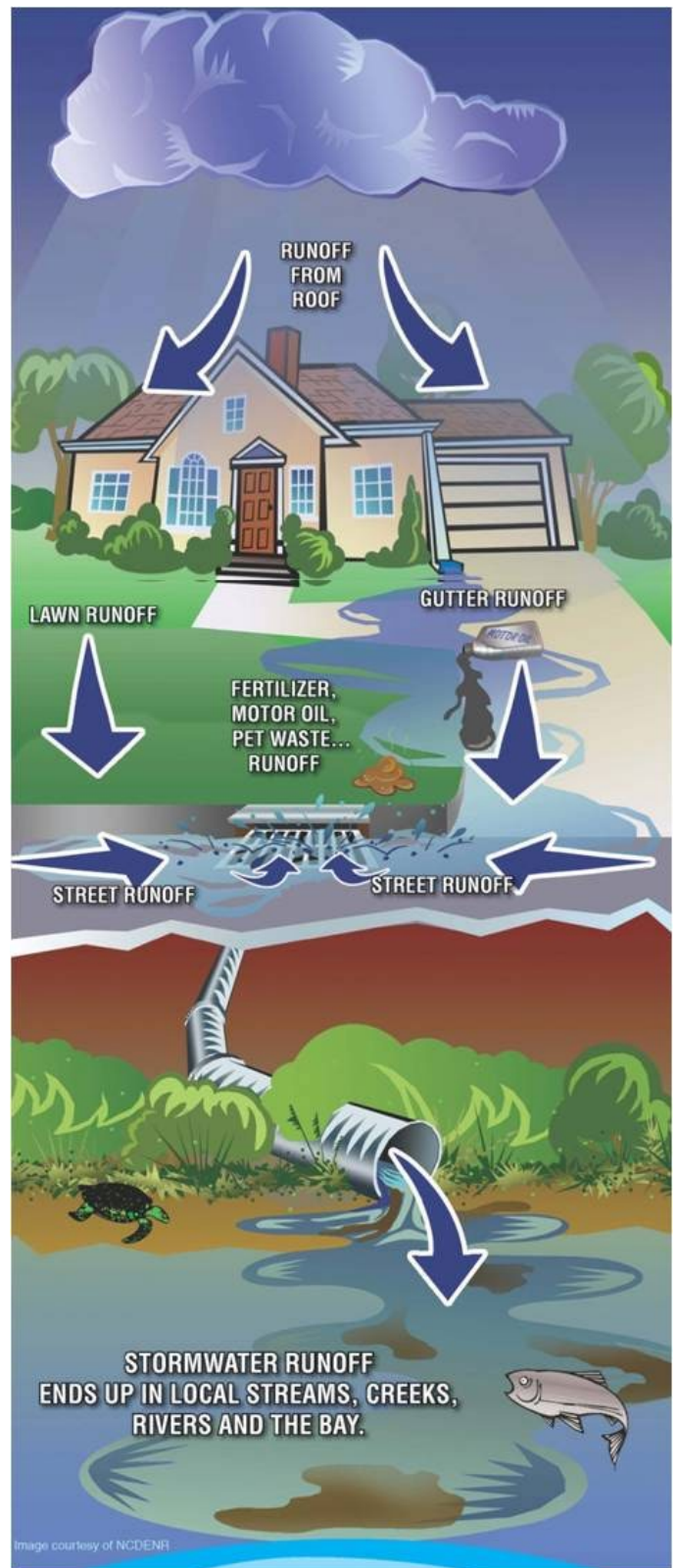
There are two major concerns with stormwater runoff:

1. The timing and the amount of the runoff:

- a) "Flash floods" are caused by stormwater runoff moving at very high speeds either across the land or through the piped storm drain system after it collects from the surrounding area.
- b) Periodic, fast-flowing stormwater damages streams by causing erosion. Insects, larvae, fish, and amphibians are directly impacted by high volumes of this moving water and indirectly impacted when stream habitat features (such as pools, and riffles) are destroyed.
- c) People can also be affected when this fast flowing stormwater damages or destroys property especially homes and buildings.

2. Pollutants contained within the runoff:

- a) Sediment from construction sites or exposed soil and from the sides of streams (streambanks)
- b) Excess pesticides/fertilizers applied on home landscaping, gardens, nurseries, agricultural fields and golf courses.
- c) Trash and debris left on roads or sidewalks
- d) Oil, auto fluids, and soapy water from car washing
- e) Pet waste that has been left on the ground



- f) Salt from winter weather road treatments
- g) Failing sewer systems or sewage leaks
- h) Household hazardous waste and hazardous waste spills
- i) Accumulated garbage and spoilage

Common Pollutants, Easy Solutions

Douglas County and the City of Oakland are making important steps to protect and improve water quality, but creating clean and healthy waterways is a community effort. There are some simple ways that citizens and businesses can help ensure clean and healthy waterways. *(Shared in-part from the City of Corvallis)*

Common Household Pollutants	Easy Solutions that Make a Difference	Additional Resources
Pet Waste creates nutrient and bacteria pollution.	<ul style="list-style-type: none"> Pick up and properly dispose of pet waste. 	For more information on eco-friendly ways to dispose of pet waste, click here .
Car Products , such as fuel, oils, and lubricants, harm water quality and ecosystems.	<ul style="list-style-type: none"> Recycle car oil and other products. Service your vehicle regularly to prevent leaks. 	For more information on recycling and material exchange options in Douglas County, click here . To download a .pdf copy of the recycling and free materials exchange options in Douglas County, click here .
Car Washing can contribute soap, dirt and grime directly to streams via the storm system when you wash your car in your driveway or street.	<ul style="list-style-type: none"> Wash cars at commercial car wash facilities; oil, gas, and grease are routed to special drains that connect to a local water treatment facility. 	For tips on how to wash our car the eco-friendly way, click here .
Sediments , exposed through construction or removal of plants, get washed by rain into storm drains and waterways and harm aquatic habitats.	<ul style="list-style-type: none"> Cover any exposed soils. Keep sediment piles away from waterways and storm drains. 	For more information about erosion and sediment control, click here .
Household Hazardous Waste , such as batteries, cleaners, and paints, contain heavy metals that are toxic to aquatic life and the entire food web.	<ul style="list-style-type: none"> Properly dispose of hazardous household products. 	For more information on how to properly dispose of household hazardous waste, click here . To report hazardous waste spills please contact the Douglas County 911 Communications Center using the non-emergency number at (541) 440-4471
Compost and Excess Fertilizers put excess nutrients into waterways, causing algal blooms and low-oxygen conditions in the water, which kills stream plants and animals.	<ul style="list-style-type: none"> Keep compost and sediments away from waterways and storm drains. Test soils before applying fertilizer and apply only as needed using slow release fertilizers. Don't fertilize when there is a chance of heavy rain or runoff from irrigation. 	For some great native plants and garden care resources, click below: <ul style="list-style-type: none"> DEQ Healthy Lawns.pdf Contact OSU Extension Office Lawn and Garden Fertilizer.pdf
Pesticides and Herbicides accumulate in waterways and are toxic to human and aquatic life. Natural alternatives can be very effective and safer for children, pets, and water.	<ul style="list-style-type: none"> Learn about natural alternatives to chemical pesticides and herbicides. Plant native vegetation, which requires less water and fewer chemicals. 	Click below for additional resources: <ul style="list-style-type: none"> Alternative Weed Control pdf. Lawn and Garden Chemicals pdf. Lawn Weed Control pdf. Guide to using Willamette Valley native plants along your stream.pdf
Pharmaceuticals, drugs and prescription meds washed down home or street drains end up in our drinking water.	<ul style="list-style-type: none"> Dispose of leftover or expired pharmaceuticals or prescription meds in the trash, <u>NOT</u> the sink, toilet, or storm drain. Properly dispose of leftover or expired pharmaceuticals or prescriptions through local take back programs and locations. 	Contact your local law enforcement agency about drug take back programs available in your area.
<p>Have questions or want to schedule a site visit to your local waterway? Contact the City of Oakland at (541) 459-4531. To access the hyperlinks for this document, please visit the City' website at https://www.oaklandoregon.org/water.html</p>		